

Listing and evaluation of the results

1: Dr. med. Max Mustermann
Laboratory Mustermann

Survey of 19 March 2021

Adviser:

251

Autoimmune Diseases 01 - Connective Tissue Diseases (ANA)

Autoantibodies against nuclei (ANA) - IIFT +

Name of test	Unit	Method	Manufacturer				
		indirect immunofluorescence test (275)	EURO IMMUN (ER)				
Result (titer)	Sample	Your value	Lower limit	Upper limit	TV-Type	Target value	Meets criteria
	21	320		<=20480	SV	160	+
	22	5120	>=160	<=20480	SV	5120	+

Collagenosis Screening (ANA) - semiquantitative +

Name of test	Unit	Method	Manufacturer				
	other unit	other method (9999)	PHADIA (THERMO FISHER SCIENTIFIC) (PH)				
Rating category	Sample	Your specification(s)	Correct specification(s)		TV-Type		Meets criteria
	21	medium AB-concentration (3)	no AB-concentration (0), positive borderline AB-concentration (1), positive low AB-concentration (2), medium AB-concentration (3), high AB-concentration (4)		ET		+
	22	high AB-concentration (4)	positive low AB-concentration (2), medium AB-concentration (3), high AB-concentration (4)		ET		+

Collagenosis Screening (ANA) - qualitative +

Name of test	Unit	Method	Manufacturer				
		other method (9999)	PHADIA (THERMO FISHER SCIENTIFIC) (PH)				
Result (qual)	Sample	Your specification(s)	Correct specification(s)		TV-Type		Meets criteria
	21	positive (1)	negative (0), positive (1)		SV		+
	22	positive (1)	positive (1)		SV		+

anti-DFS70 / LEDGF - qualitative +

Name of test	Unit	Method	Manufacturer				
		Immunoblot (247)	EURO IMMUN (ER)				
Result (qual)	Sample	Your specification(s)	Correct specification(s)		TV-Type		Meets criteria
	21	negative (0)	negative (0)		SV		+
	22	negative (0)	negative (0)		SV		+

Listing and evaluation of the results

1: Dr. med.Max Mustermann
Laboratory Mustermann

Survey of 19 March 2021

Autoantibodies against dsDNA - IIFT

Name of test	Unit	Method	Manufacturer				
		indirect immunofluorescence test (275)	EURO IMMUN (ER)				
Result (titer)	Sample	Your value	Lower limit	Upper limit	TV-Type	Target value	Meets criteria
	21	0		<640			+
	22	0		<4.00			+

Autoantibodies against dsDNA - semiquantitative

Name of test	Unit	Method	Manufacturer				
	IU/ml	other method (9999)	PHADIA (THERMO FISHER SCIENTIFIC) (PH)				
Rating category	Sample	Your specification(s)	Correct specification(s)		TV-Type		Meets criteria
	21	positive low AB-concentration (2)	no AB-concentration (0), positive borderline AB-concentration (1), positive low AB-concentration (2), medium AB-concentration (3), high AB-concentration (4)		ET		+
	22	no AB-concentration (0)	no AB-concentration (0)		ET		+

Autoantibodies against dsDNA - qualitative

Name of test	Unit	Method	Manufacturer				
		Immunoblot (247)	EURO IMMUN (ER)				
Result (qual)	Sample	Your specification(s)	Correct specification(s)		TV-Type		Meets criteria
	21	negative (0)	negative (0), positive (1)		SV		+
	22	negative (0)	negative (0)		SV		+

253

Autoimmune Diseases 02 - Hepatic Syndromes

anti-Mitochondria - IIFT

Name of test	Unit	Method	Manufacturer				
		indirect immunofluorescence test (275)	EURO IMMUN (ER)				
Result (titer)	Sample	Your value	Lower limit	Upper limit	TV-Type	Target value	Meets criteria
	21	5120	320	20480	SV	2560	+
	22	5120	320	20480	SV	2560	+

anti-Mitochondria (M2) - qualitative

Name of test	Unit	Method	Manufacturer				
		Immunoblot (247)	EURO IMMUN (ER)				
Result (qual)	Sample	Your specification(s)	Correct specification(s)		TV-Type		Meets criteria
	21	positive (1)	positive (1)		SV		+
	22	positive (1)	positive (1)		SV		+

Listing and evaluation of the results

1: Dr. med.Max Mustermann
Laboratory Mustermann

Survey of 19 March 2021

anti-Microsomes (LKM 1) - IIFT

Name of test	Unit	Method	Manufacturer				
		indirect immunofluorescence test (275)	EURO IMMUN (ER)				
Result (titer)	Sample	Your value	Lower limit	Upper limit	TV-Type	Target value	Meets criteria
	21	0		<4.00			+
	22	0		<4.00			+

anti-Microsomes (LKM 1) - qualitative

Name of test	Unit	Method	Manufacturer				
		Immunoblot (247)	EURO IMMUN (ER)				
Result (qual)	Sample	Your specification(s)	Correct specification(s)		TV-Type		Meets criteria
	21	negative (0)	negative (0)		SV		+
	22	negative (0)	negative (0)		SV		+

anti-smooth muscle - IIFT

Name of test	Unit	Method	Manufacturer				
		indirect immunofluorescence test (275)	EURO IMMUN (ER)				
Result (titer)	Sample	Your value	Lower limit	Upper limit	TV-Type	Target value	Meets criteria
	21	0		<4.00			+
	22	0		<4.00			+

anti-Actin - IIFT

Name of test	Unit	Method	Manufacturer				
		indirect immunofluorescence test (275)	EURO IMMUN (ER)				
Result (titer)	Sample	Your value	Lower limit	Upper limit	TV-Type	Target value	Meets criteria
	21	0		<=40.0			+
	22	0		<=40.0			+

anti-H+/K+-ATPase - semiquantitative

Name of test	Unit	Method	Manufacturer				
	U/ml	other method (9999)	PHADIA (THERMO FISHER SCIENTIFIC) (PH)				
Rating category	Sample	Your specification(s)	Correct specification(s)		TV-Type		Meets criteria
	21	no AB-concentration (0)	no AB-concentration (0)		ET		+
	22	no AB-concentration (0)	no AB-concentration (0)		ET		+

257

Autoimmune Diseases 04 - Vasculitis / Glomerulopathies

c-ANCA - IIFT

Name of test	Unit	Method	Manufacturer				
		indirect immunofluorescence test (275)	EURO IMMUN (ER)				
Result (titer)	Sample	Your value	Lower limit	Upper limit	TV-Type	Target value	Meets criteria
	21	160	>=40.0	<=5120	SV	320	+
	22	160	>=40.0	<=5120	SV	640	+

Listing and evaluation of the results

1: Dr. med. Max Mustermann
Laboratory Mustermann

Survey of 19 March 2021

p-ANCA - IIFT

Name of test	Unit	Method	Manufacturer				
		indirect immunofluorescence test (275)	EURO IMMUN (ER)				
Result (titer)	Sample	Your value	Lower limit	Upper limit	TV-Type	Target value	Meets criteria
	21	0		<4.00			+
	22	0		<4.00			+

anti-PR3 - semiquantitative

Name of test	Unit	Method	Manufacturer				
	U/ml	other method (9999)	PHADIA (THERMO FISHER SCIENTIFIC) (PH)				
Rating category	Sample	Your specification(s)	Correct specification(s)		TV-Type		Meets criteria
	21	high AB-concentration (4)	medium AB-concentration (3), high AB-concentration (4)		ET		+
	22	high AB-concentration (4)	medium AB-concentration (3), high AB-concentration (4)		ET		+

anti-MPO - semiquantitative

Name of test	Unit	Method	Manufacturer				
	U/ml	other method (9999)	PHADIA (THERMO FISHER SCIENTIFIC) (PH)				
Rating category	Sample	Your specification(s)	Correct specification(s)		TV-Type		Meets criteria
	21	no AB-concentration (0)	no AB-concentration (0)		ET		+
	22	no AB-concentration (0)	no AB-concentration (0)		ET		+

anti-glomerular basement membrane (GBM) - semiquantitative

Name of test	Unit	Method	Manufacturer				
	U/ml	other method (9999)	PHADIA (THERMO FISHER SCIENTIFIC) (PH)				
Rating category	Sample	Your specification(s)	Correct specification(s)		TV-Type		Meets criteria
	21	no AB-concentration (0)	no AB-concentration (0)		ET		+
	22	no AB-concentration (0)	no AB-concentration (0), positive borderline AB-concentration (1), positive low AB-concentration (2)		ET		+

259

Autoimmune Diseases 05 - Autoimmune Dermatitis

anti-Desmosomes - IIFT

Name of test	Unit	Method	Manufacturer				
		indirect immunofluorescence test (275)	EURO IMMUN (ER)				
Result (titer)	Sample	Your value	Lower limit	Upper limit	TV-Type	Target value	Meets criteria
	21	0		<4.00			+
	22	0		<4.00			+

Listing and evaluation of the results

1: Dr. med. Max Mustermann
Laboratory Mustermann

Survey of 19 March 2021

anti-Hemidesmosomes - IIFT

Name of test	Unit	Method	Manufacturer				
		indirect immunofluorescence test (275)	EURO IMMUN (ER)				
Result (titer)	Sample	Your value	Lower limit	Upper limit	TV-Type	Target value	Meets criteria
	21	320	80.0	5120	SV	640	+
	22	0		<4.00			+

269

Autoimmune Diseases 10 - Myasthenia gravis

anti-Acetylcholin receptors - semiquantitative

Name of test	Unit	Method	Manufacturer				
	nmol/l	Radioimmunoassay (RIA) (66)	IBL (IB)				
Rating category	Sample	Your specification(s)	Correct specification(s)		TV-Type		Meets criteria
	21	high AB-concentration (4)	medium AB-concentration (3), high AB-concentration (4)		ET		+
	22	high AB-concentration (4)	medium AB-concentration (3), high AB-concentration (4)		ET		+

anti-musclespecific Receptor Tyrosinkinase (MuSK) - semiquantitative

Name of test	Unit	Method	Manufacturer				
	U/ml	Immunological test (ELISA) (190)	IBL (IB)				
Rating category	Sample	Your specification(s)	Correct specification(s)		TV-Type		Meets criteria
	21	no AB-concentration (0)	no AB-concentration (0)		ET		+
	22	no AB-concentration (0)	no AB-concentration (0)		ET		+

anti-skeletal muscle - IIFT

Name of test	Unit	Method	Manufacturer				
		indirect immunofluorescence test (275)	EURO IMMUN (ER)				
Result (titer)	Sample	Your value	Lower limit	Upper limit	TV-Type	Target value	Meets criteria
	21	0		<4.00			+
	22	0		<4.00			+

anti-Titin - semiquantitative

Name of test	Unit	Method	Manufacturer				
	U/ml	Immunological test (ELISA) (190)	DLD DIAGNOSTIKA (DX)				
Rating category	Sample	Your specification(s)	Correct specification(s)		TV-Type		Meets criteria
	21	no AB-concentration (0)	no AB-concentration (0)		ET		+
	22	no AB-concentration (0)	no AB-concentration (0)		ET		+

anti-Titin - qualitative

Name of test	Unit	Method	Manufacturer				
		Immunological test (ELISA) (190)	DLD DIAGNOSTIKA (DX)				
Result (qual)	Sample	Your specification(s)	Correct specification(s)		TV-Type		Meets criteria
	21	negative (0)	negative (0)		SV		+
	22	negative (0)	negative (0)		SV		+

Listing and evaluation of the results

1: Dr. med.Max Mustermann
Laboratory Mustermann

Survey of 19 March 2021

271

Autoimmune Diseases 11 - Gluten-Sensitive Enteropathies

anti-Gliadin IgG

Name of test	Unit	Method	Manufacturer			
	U/ml	other method (9999)	PHADIA (THERMO FISHER SCIENTIFIC) (PH)			
Rating category	Sample	Your specification(s)	Correct specification(s)	TV-Type		Meets criteria
	21	positive low AB-concentration (2)	positive low AB-concentration (2), medium AB-concentration (3), high AB-concentration (4)	ET		+
	22	medium AB-concentration (3)	positive low AB-concentration (2), medium AB-concentration (3), high AB-concentration (4)	ET		+

anti-Gliadin IgA

Name of test	Unit	Method	Manufacturer			
	U/ml	other method (9999)	PHADIA (THERMO FISHER SCIENTIFIC) (PH)			
Rating category	Sample	Your specification(s)	Correct specification(s)	TV-Type		Meets criteria
	21	positive low AB-concentration (2)	positive low AB-concentration (2), medium AB-concentration (3), high AB-concentration (4)	ET		+
	22	positive low AB-concentration (2)	positive low AB-concentration (2), medium AB-concentration (3), high AB-concentration (4)	ET		+

anti-Transglutaminase IgA

Name of test	Unit	Method	Manufacturer			
	U/ml	other method (9999)	PHADIA (THERMO FISHER SCIENTIFIC) (PH)			
Rating category	Sample	Your specification(s)	Correct specification(s)	TV-Type		Meets criteria
	21	high AB-concentration (4)	medium AB-concentration (3), high AB-concentration (4)	ET		+
	22	high AB-concentration (4)	medium AB-concentration (3), high AB-concentration (4)	ET		+

273

Autoimmune Diseases 12 - Rheumatoid Arthritis

anti-CCP (cyclic citrulline peptide)

Name of test	Unit	Method	Manufacturer			
	IU/ml	other method (9999)	PHADIA (THERMO FISHER SCIENTIFIC) (PH)			
Rating category	Sample	Your specification(s)	Correct specification(s)	TV-Type		Meets criteria
	21	positive low AB-concentration (2)	positive low AB-concentration (2), medium AB-concentration (3)	ET		+
	22	high AB-concentration (4)	medium AB-concentration (3), high AB-concentration (4)	ET		+

Listing and evaluation of the results

1: Dr. med.Max Mustermann
Laboratory Mustermann

Survey of 19 March 2021

Rheumatoid Factor (IgM)

Name of test	Unit	Method	Manufacturer			
	IU/ml	other method (9999)	PHADIA (THERMO FISHER SCIENTIFIC) (PH)			
Rating category	Sample	Your specification(s)	Correct specification(s)	TV-Type		Meets criteria
	21	high AB-concentration (4)	medium AB-concentration (3), high AB-concentration (4)	ET		+
	22	high AB-concentration (4)	positive low AB-concentration (2), medium AB-concentration (3), high AB-concentration (4)	ET		+

Rheumatoid Factor (IgG)

Name of test	Unit	Method	Manufacturer			
	IU/ml	other method (9999)	PHADIA (THERMO FISHER SCIENTIFIC) (PH)			
Rating category	Sample	Your specification(s)	Correct specification(s)	TV-Type		Meets criteria
	21	no AB-concentration (0)	positive borderline AB-concentration (1), positive low AB-concentration (2), medium AB-concentration (3), high AB-concentration (4)	ET		-
	22	positive borderline AB-concentration (1)	positive borderline AB-concentration (1), positive low AB-concentration (2), medium AB-concentration (3), high AB-concentration (4)	ET		+

Rheumatoid Factor (IgA)

Name of test	Unit	Method	Manufacturer			
	IU/ml	other method (9999)	PHADIA (THERMO FISHER SCIENTIFIC) (PH)			
Rating category	Sample	Your specification(s)	Correct specification(s)	TV-Type		Meets criteria
	21	high AB-concentration (4)	medium AB-concentration (3), high AB-concentration (4)	ET		+
	22	medium AB-concentration (3)	positive low AB-concentration (2), medium AB-concentration (3), high AB-concentration (4)	ET		+

Individual summary of results

1: Dr. med. Max Mustermann
Laboratory Mustermann

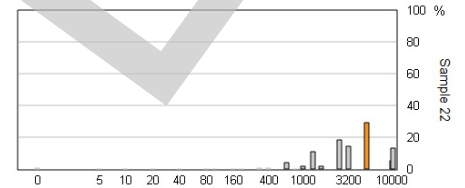
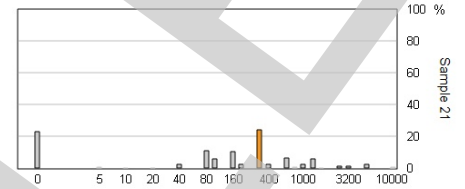
Survey of 19 March 2021

251

Autoimmune Diseases 01 - Connective Tissue Diseases (ANA)

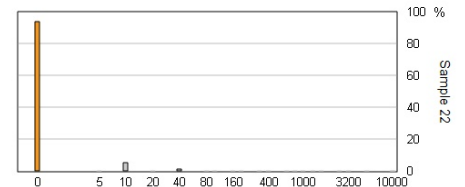
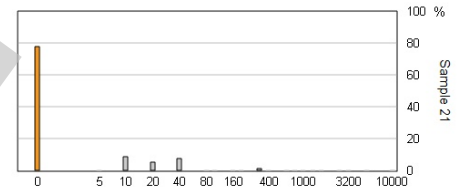
Autoantibodies against nuclei (ANA) - IIFT (Titer, N = 258)								
Collective	Sample	Target value	Target range	Participants collective			Rate (%)	
				AVG	CV	Num.	Sam.	total
Ref.-range up to 100	21		- <=20480	237		201	99.5	99.0
	22		>=160 - <=20480	4117		201	99.5	
Ref.-range up to 160	21		- <=20480	321		29	100	100
	22		>=640 - <=40960	3956		29	100	
Ref.-range from 160	21		- <=20480	660		2	100	100
	22		>=640 - <=40960	5640		2	100	
without ref.-range	21		Sample not evaluated			26		
	22		Sample not evaluated			26		

Rate of success: 99,1%



Autoantibodies against dsDNA - IIFT (Titer, N = 90)								
Collective	Sample	Target value	Target range	Participants collective			Rate (%)	
				AVG	CV	Num.	Sam.	total
Ref.-range included	21		- <640	0.000		81	100	92.6
	22		- <4.00	0.000		81	92.6	
without ref.-range	21		Sample not evaluated			9		
	22		Sample not evaluated			9		

Rate of success: 92,6%



251

Autoimmune Diseases 01 - Connective Tissue Diseases (ANA)

Collagenosis Screening (ANA) - semiquantitative (N = 65, Rate of success: 93,8%)

Sample 21

Collective	no AB-concentration (0)	positive borderline AB-concentration (1)	positive low AB-concentration (2)	medium AB-concentration (3)	high AB-concentration (4)	total
all methods	22 ●	14 ●	15 ●	13 ●	1 ●	65

Sample 22

Collective	no AB-concentration (0)	positive borderline AB-concentration (1)	positive low AB-concentration (2)	medium AB-concentration (3)	high AB-concentration (4)	total
all methods	2	2	1 ●	17 ●	43 ●	65

The point corresponds to the correct result, the horizontal bar corresponds to your specification, the vertical bar corresponds to your collective

Collagenosis Screening (ANA) - qualitative (N = 77, Rate of success: 97,4%)
Sample 21

Collective	negative	positive	total
all methods	22 ●	55 ●	77

Sample 22

Collective	negative	positive	total
all methods	0	75 ●	75

The point corresponds to the correct result, the horizontal bar corresponds to your specification, the vertical bar corresponds to your collective

anti-DFS70 / LEDGF - qualitative (N = 113, Rate of success: 99,1%)
Sample 21

Collective	negative	positive	total
all methods	113 ●	0	113

Sample 22

Collective	negative	positive	total
all methods	112 ●	0	112

The point corresponds to the correct result, the horizontal bar corresponds to your specification, the vertical bar corresponds to your collective

Autoantibodies against dsDNA - semiquantitative (N = 222, Rate of success: 92,8%)
Sample 21

Collective	no AB-concentration (0)	positive borderline AB-concentration (1)	positive low AB-concentration (2)	medium AB-concentration (3)	high AB-concentration (4)	total
all methods	89 ●	31 ●	63 ●	34 ●	5 ●	222

Sample 22

Collective	no AB-concentration (0)	positive borderline AB-concentration (1)	positive low AB-concentration (2)	medium AB-concentration (3)	high AB-concentration (4)	total
all methods	206 ●	6	7	1	2	222

The point corresponds to the correct result, the horizontal bar corresponds to your specification, the vertical bar corresponds to your collective

Autoantibodies against dsDNA - qualitative (N = 107, Rate of success: 97,2%)
Sample 21

Collective	negative	positive	total
all methods	81 ●	26 ●	107

Sample 22

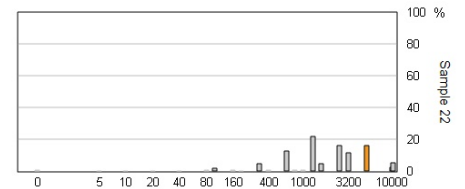
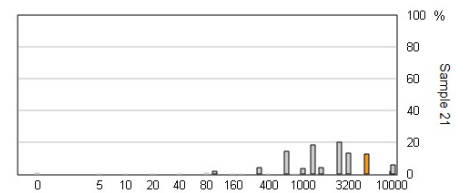
Collective	negative	positive	total
all methods	104 ●	1	105

The point corresponds to the correct result, the horizontal bar corresponds to your specification, the vertical bar corresponds to your collective

253
Autoimmune Diseases 02 - Hepatic Syndromes
anti-Mitochondria - IIFT (Titer, N = 166)

Collective	Sample	Target value	Target range	Participants collective			Rate (%)	
				AVG	CV	Num.	Sam.	total
Ref.-range included	21	2560	320 - 20480	2420		157	98.7	98.7
	22	2560	320 - 20480	2471		157	98.7	
without ref.-range	21		Sample not evaluated			9		
	22		Sample not evaluated			9		

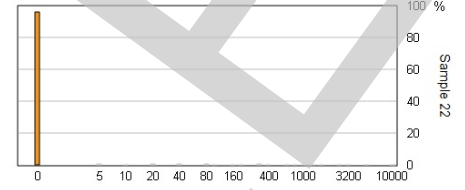
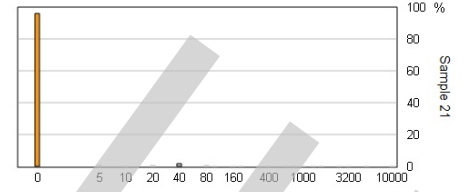
Rate of success: 98,7%





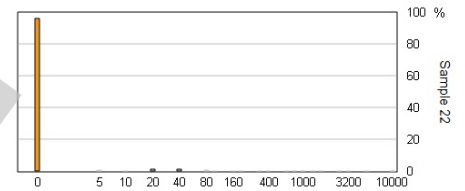
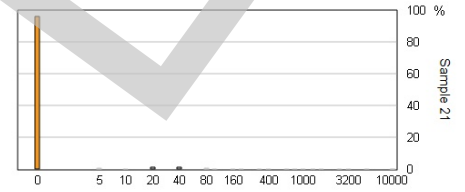
anti-Microsomes (LKM 1) - IIFT (Titer, N = 126)									
Collective	Sample	Target value	Target range	Participants collective			Rate (%)		
				AVG	CV	Num.	Sam.	total	
Ref.-range included	21		- <4.00	0.000		118	98.3	96.6	
	22		- <4.00	0.000		118	97.5		
without ref.-range	21		Sample not evaluated			8			
	22		Sample not evaluated			8			

Rate of success: 96,6%



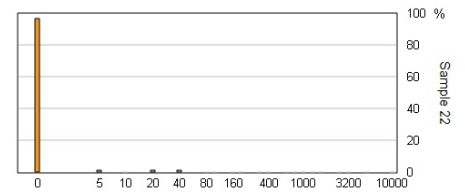
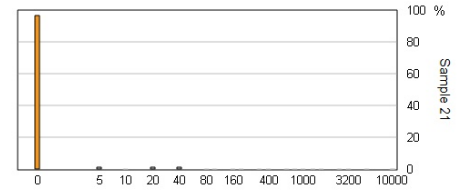
anti-smooth muscle - IIFT (Titer, N = 157)									
Collective	Sample	Target value	Target range	Participants collective			Rate (%)		
				AVG	CV	Num.	Sam.	total	
Ref.-range included	21		- <4.00	0.000		148	99.3	99.3	
	22		- <4.00	0.000		148	99.3		
without ref.-range	21		Sample not evaluated			9			
	22		Sample not evaluated			9			

Rate of success: 99,3%



anti-Actin - IIFT (Titer, N = 100)									
Collective	Sample	Target value	Target range	Participants collective			Rate (%)		
				AVG	CV	Num.	Sam.	total	
Ref.-range included	21		- <=40.0	0.000		95	100	98.9	
	22		- <=40.0	0.000		95	98.9		
without ref.-range	21		Sample not evaluated			5			
	22		Sample not evaluated			5			

Rate of success: 98,9%



253 Autoimmune Diseases 02 - Hepatic Syndromes

anti-Mitochondria (M2) - qualitative (N = 115, Rate of success: 99,1%)

Sample 21

Collective	negative	positive	total
all methods	1	114 ●	115

Sample 22

Collective	negative	positive	total
all methods	1	114 ●	115

The point corresponds to the correct result, the horizontal bar corresponds to your specification, the vertical bar corresponds to your collective

anti-Microsomes (LKM 1) - qualitative (N = 102, Rate of success: 100%)

Sample 21

Collective	negative	positive	total
all methods	102 ●	0	102

Sample 22

Collective	negative	positive	total
all methods	102 ●	0	102

The point corresponds to the correct result, the horizontal bar corresponds to your specification, the vertical bar corresponds to your collective

anti-H+/K+-ATPase - semiquantitative (N = 65, Rate of success: 100%)

Sample 21

Collective	no AB-concentration (0)	positive borderline AB-concentration (1)	positive low AB-concentration (2)	medium AB-concentration (3)	high AB-concentration (4)	total
all methods	65 ●	0	0	0	0	65

Sample 22

Collective	no AB-concentration (0)	positive borderline AB-concentration (1)	positive low AB-concentration (2)	medium AB-concentration (3)	high AB-concentration (4)	total
all methods	65 ●	0	0	0	0	65

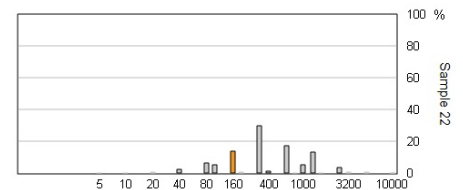
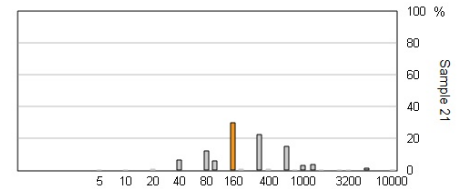
The point corresponds to the correct result, the horizontal bar corresponds to your specification, the vertical bar corresponds to your collective

257 Autoimmune Diseases 04 - Vasculitis / Glomerulopathies

c-ANCA - IIFT (Titer, N = 158)

Collective	Sample	Target value	Target range	Participants collective			Rate (%)	
				AVG	CV	Num.	Sam.	total
Ref.-range included	21		>=40.0 - <=5120	283		144	99.3	99.3
	22		>=40.0 - <=5120	502		144	99.3	
without ref.-range	21		Sample not evaluated			14		
	22		Sample not evaluated			14		

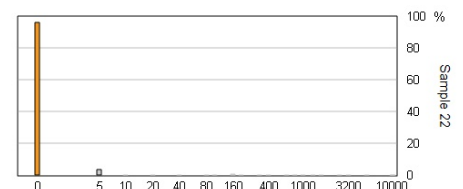
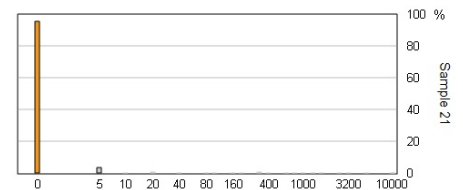
Rate of success: 99,3%



p-ANCA - IIFT (Titer, N = 157)

Collective	Sample	Target value	Target range	Participants collective			Rate (%)	
				AVG	CV	Num.	Sam.	total
Ref.-range included	21		- <4.00	0.000		145	98.6	98.6
	22		- <4.00	0.000		145	99.3	
without ref.-range	21		Sample not evaluated			12		
	22		Sample not evaluated			12		

Rate of success: 98,6%



anti-PR3 - semiquantitative (N = 204, Rate of success: 98,5%)
Sample 21

Collective	no AB-concentration (0)	positive borderline AB-concentration (1)	positive low AB-concentration (2)	medium AB-concentration (3)	high AB-concentration (4)	total
all methods	1	0	2	16	185	204

Sample 22

Collective	no AB-concentration (0)	positive borderline AB-concentration (1)	positive low AB-concentration (2)	medium AB-concentration (3)	high AB-concentration (4)	total
all methods	0	0	1	5	198	204

The point corresponds to the correct result, the horizontal bar corresponds to your specification, the vertical bar corresponds to your collective

anti-MPO - semiquantitative (N = 204, Rate of success: 97,5%)
Sample 21

Collective	no AB-concentration (0)	positive borderline AB-concentration (1)	positive low AB-concentration (2)	medium AB-concentration (3)	high AB-concentration (4)	total
all methods	201	2	0	0	1	204

Sample 22

Collective	no AB-concentration (0)	positive borderline AB-concentration (1)	positive low AB-concentration (2)	medium AB-concentration (3)	high AB-concentration (4)	total
all methods	201	2	1	0	0	204

The point corresponds to the correct result, the horizontal bar corresponds to your specification, the vertical bar corresponds to your collective

anti-glomerular basement membrane (GBM) - semiquantitative (N = 84, Rate of success: 100%)
Sample 21

Collective	no AB-concentration (0)	positive borderline AB-concentration (1)	positive low AB-concentration (2)	medium AB-concentration (3)	high AB-concentration (4)	total
all methods	84	0	0	0	0	84

Sample 22

Collective	no AB-concentration (0)	positive borderline AB-concentration (1)	positive low AB-concentration (2)	medium AB-concentration (3)	high AB-concentration (4)	total
all methods	50	25	9	0	0	84

The point corresponds to the correct result, the horizontal bar corresponds to your specification, the vertical bar corresponds to your collective

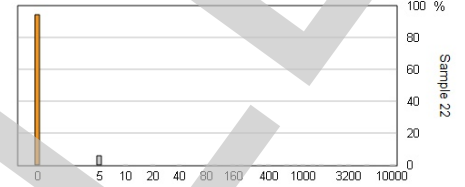
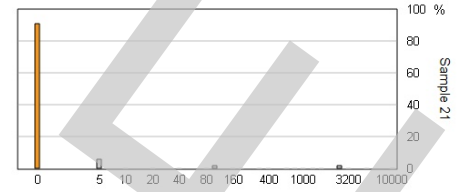


259

Autoimmune Diseases 05 - Autoimmune Dermatitis

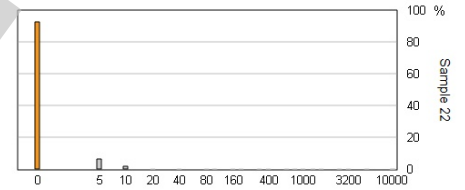
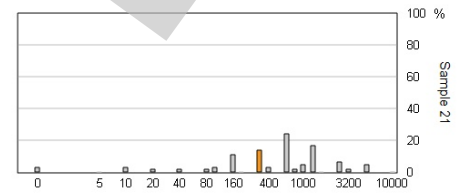
anti- Desmosomes - IIFT (Titer, N = 68)								
Collective	Sample	Target value	Target range	Participants collective			Rate (%)	
				AVG	CV	Num.	Sam.	total
Ref.-range included	21		- <4.00	0.000		67	95.5	95.5
	22		- <4.00	0.000		67	98.5	
without ref.-range	21		Sample not evaluated			1		
	22		Sample not evaluated			1		

Rate of success: 95,5%



anti-Hemidesmosomes - IIFT (Titer, N = 67)								
Collective	Sample	Target value	Target range	Participants collective			Rate (%)	
				AVG	CV	Num.	Sam.	total
Ref.-range included	21	640	80.0 - 5120	696		66	93.9	90.9
	22		- <4.00	0.000		66	97.0	
without ref.-range	21		Sample not evaluated			1		
	22		Sample not evaluated			1		

Rate of success: 90,9%

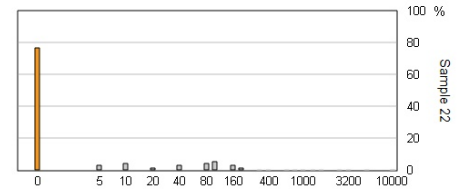
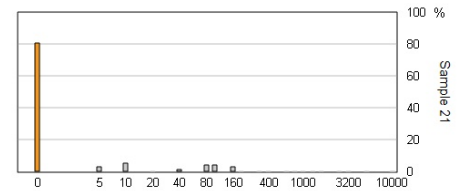


269

Autoimmune Diseases 10 - Myasthenia gravis

anti-skeletal muscle - IIFT (Titer, N = 82)								
Collective	Sample	Target value	Target range	Participants collective			Rate (%)	
				AVG	CV	Num.	Sam.	total
Ref.-range included	21		- <4.00	0.000		77	87.0	80.5
	22		- <4.00	0.000		77	84.4	
without ref.-range	21		Sample not evaluated			5		
	22		Sample not evaluated			5		

Rate of success: 80,5%





Autoimmune Diseases 10 - Myasthenia gravis

anti-Acetylcholin receptors - semiquantitative (N = 75, Rate of success: 97,3%)

Sample 21

Collective	no AB-concentration (0)	positive borderline AB-concentration (1)	positive low AB-concentration (2)	medium AB-concentration (3)	high AB-concentration (4)	total
all methods	1	0	0	23	51	75

Sample 22

Collective	no AB-concentration (0)	positive borderline AB-concentration (1)	positive low AB-concentration (2)	medium AB-concentration (3)	high AB-concentration (4)	total
all methods	1	1	0	21	52	75

The point corresponds to the correct result, the horizontal bar corresponds to your specification, the vertical bar corresponds to your collective

anti-musclespecific Receptor Tyrosinkinase (MuSK) - semiquantitative (N = 44, Rate of success: 100%)

Sample 21

Collective	no AB-concentration (0)	positive borderline AB-concentration (1)	positive low AB-concentration (2)	medium AB-concentration (3)	high AB-concentration (4)	total
all methods	44	0	0	0	0	44

Sample 22

Collective	no AB-concentration (0)	positive borderline AB-concentration (1)	positive low AB-concentration (2)	medium AB-concentration (3)	high AB-concentration (4)	total
all methods	44	0	0	0	0	44

The point corresponds to the correct result, the horizontal bar corresponds to your specification, the vertical bar corresponds to your collective

anti-Titin - semiquantitative (N = 13, Rate of success: 100%)

Sample 21

Collective	no AB-concentration (0)	positive borderline AB-concentration (1)	positive low AB-concentration (2)	medium AB-concentration (3)	high AB-concentration (4)	total
all methods	13	0	0	0	0	13

Sample 22

Collective	no AB-concentration (0)	positive borderline AB-concentration (1)	positive low AB-concentration (2)	medium AB-concentration (3)	high AB-concentration (4)	total
all methods	13	0	0	0	0	13

The point corresponds to the correct result, the horizontal bar corresponds to your specification, the vertical bar corresponds to your collective

anti-Titin - qualitative (N = 41, Rate of success: 100%)

Sample 21

Collective	negative	positive	total
all methods	41	0	41

Sample 22

Collective	negative	positive	total
all methods	41	0	41

The point corresponds to the correct result, the horizontal bar corresponds to your specification, the vertical bar corresponds to your collective



Autoimmune Diseases 11 - Gluten-Sensitive Enteropathies

anti-Gliadin IgG (N = 38, Rate of success: 84,2%)

Sample 21

Collective	no AB-concentration (0)	positive borderline AB-concentration (1)	positive low AB-concentration (2)	medium AB-concentration (3)	high AB-concentration (4)	total
all methods	4	2	9 ●	21 ●	2 ●	38

Sample 22

Collective	no AB-concentration (0)	positive borderline AB-concentration (1)	positive low AB-concentration (2)	medium AB-concentration (3)	high AB-concentration (4)	total
all methods	1	1	8 ●	22 ●	3 ●	35

The point corresponds to the correct result, the horizontal bar corresponds to your specification, the vertical bar corresponds to your collective

anti-Gliadin IgA (N = 38, Rate of success: 68,4%)

Sample 21

Collective	no AB-concentration (0)	positive borderline AB-concentration (1)	positive low AB-concentration (2)	medium AB-concentration (3)	high AB-concentration (4)	total
all methods	8	4	11 ●	11 ●	4 ●	38

Sample 22

Collective	no AB-concentration (0)	positive borderline AB-concentration (1)	positive low AB-concentration (2)	medium AB-concentration (3)	high AB-concentration (4)	total
all methods	6	2	13 ●	12 ●	4 ●	37

The point corresponds to the correct result, the horizontal bar corresponds to your specification, the vertical bar corresponds to your collective

anti-Transglutaminase IgA (N = 153, Rate of success: 98%)

Sample 21

Collective	no AB-concentration (0)	positive borderline AB-concentration (1)	positive low AB-concentration (2)	medium AB-concentration (3)	high AB-concentration (4)	total
all methods	0	0	1	18 ●	134 ●	153

Sample 22

Collective	no AB-concentration (0)	positive borderline AB-concentration (1)	positive low AB-concentration (2)	medium AB-concentration (3)	high AB-concentration (4)	total
all methods	0	1	2	15 ●	135 ●	153

The point corresponds to the correct result, the horizontal bar corresponds to your specification, the vertical bar corresponds to your collective



Autoimmune Diseases 12 - Rheumatoid Arthritis

anti-CCP (cyclic citrulline peptide) (N = 189, Rate of success: 84,1%)

Sample 21

Collective	no AB-concentration (0)	positive borderline AB-concentration (1)	positive low AB-concentration (2)	medium AB-concentration (3)	high AB-concentration (4)	total
all methods	3	18	76 ●	83 ●	9	189

Sample 22

Collective	no AB-concentration (0)	positive borderline AB-concentration (1)	positive low AB-concentration (2)	medium AB-concentration (3)	high AB-concentration (4)	total
all methods	0	0	0	7 ●	181 ●	188

The point corresponds to the correct result, the horizontal bar corresponds to your specification, the vertical bar corresponds to your collective

Rheumatoid Factor (IgM) (N = 59, Rate of success: 71,2%)

Sample 21

Collective	no AB-concentration (0)	positive borderline AB-concentration (1)	positive low AB-concentration (2)	medium AB-concentration (3)	high AB-concentration (4)	total
all methods	2	0	3	10 ●	44 ●	59

Sample 22

Collective	no AB-concentration (0)	positive borderline AB-concentration (1)	positive low AB-concentration (2)	medium AB-concentration (3)	high AB-concentration (4)	total
all methods	4	8	17 ●	19 ●	10 ●	58

The point corresponds to the correct result, the horizontal bar corresponds to your specification, the vertical bar corresponds to your collective

Rheumatoid Factor (IgG) (N = 42, Rate of success: 71,4%)

Sample 21

Collective	no AB-concentration (0)	positive borderline AB-concentration (1)	positive low AB-concentration (2)	medium AB-concentration (3)	high AB-concentration (4)	total
all methods	8	5 ●	9 ●	6 ●	14 ●	42

Sample 22

Collective	no AB-concentration (0)	positive borderline AB-concentration (1)	positive low AB-concentration (2)	medium AB-concentration (3)	high AB-concentration (4)	total
all methods	10	3 ●	21 ●	8 ●	0 ●	42

The point corresponds to the correct result, the horizontal bar corresponds to your specification, the vertical bar corresponds to your collective

Rheumatoid Factor (IgA) (N = 50, Rate of success: 88%)

Sample 21

Collective	no AB-concentration (0)	positive borderline AB-concentration (1)	positive low AB-concentration (2)	medium AB-concentration (3)	high AB-concentration (4)	total
all methods	2	0	0	4 ●	44 ●	50

Sample 22

Collective	no AB-concentration (0)	positive borderline AB-concentration (1)	positive low AB-concentration (2)	medium AB-concentration (3)	high AB-concentration (4)	total
all methods	2	4	10 ●	15 ●	19 ●	50

The point corresponds to the correct result, the horizontal bar corresponds to your specification, the vertical bar corresponds to your collective